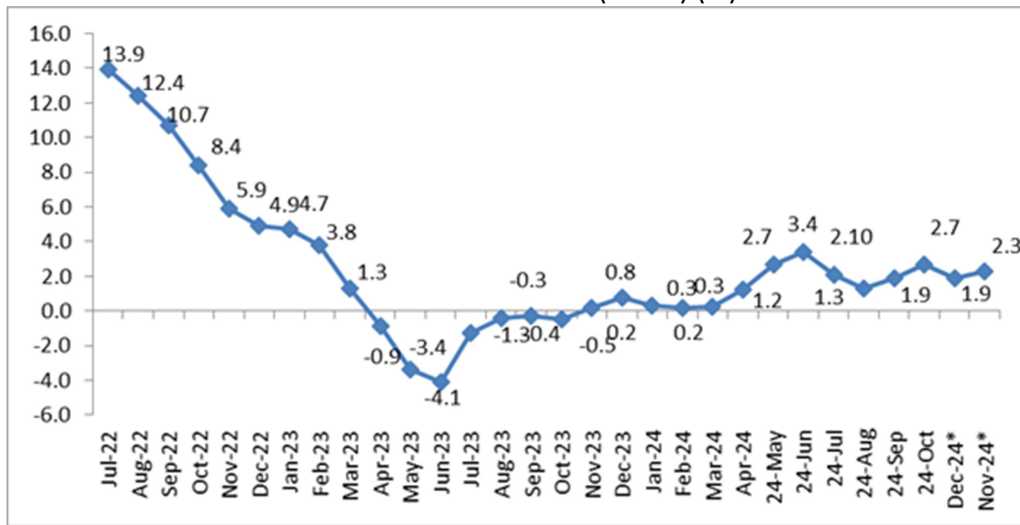


WPI inflation stands at 2.3% in December 2024

The annual rate of inflation based on the All India Wholesale Price Index (WPI) number is 2.37% (provisional) for the month of December, 2024 (over December, 2023). Positive rate of inflation in December, 2024 is primarily due to increase in prices of primary articles, manufacture of food products, other manufacturing, manufacture of textiles and non-food articles etc.

Trend in WPI Inflation (Y-O-Y) (%)



Source: PHD Research Bureau, PHDCCI, compiled from the office of the Economic Advisor, Government of India (Note: Figures are rounded off)

*Provisional

WPI inflation in Select Commodities (Base year: 2011-12)

S. No.	Commodity	WPI Inflation Y-o-Y % growth			Change in December 2024 as Compared to Previous Month
		Oct-24	Nov-24*	Dec-24*	
1	All Commodities	2.75	1.89	2.37	↑
2	Primary Articles	8.26	5.49	6.02	↑

3	Food Articles	13.49	8.63	8.47	↓
4	Cereals	7.80	7.81	6.82	↓
5	Vegetables	62.86	28.57	28.65	↑
6	Non-food Articles	-1.34	-0.98	2.46	↑
7	Crude Petroleum & Natural gas	- 11.80	-8.11	-6.77	↑
8	Fuel & Power	-4.31	-5.83	-3.79	↑
9	Petrol	-7.35	-6.83	-5.09	↑
10	Manufactured Products	1.78	2.00	2.14	↑

Source: PHD Research Bureau, PHDCCI, compiled from the Office of the Economic Advisor, Government of India (Note: Figures are rounded off)

*Provisional

Please contact, for any query related to this mail, Dr. Mansi Vinaik, Deputy Secretary, at mansi.vinaik@phdcci.in, and Ms. Mansi Nautiyal, Research Associate at mansi.nautiyal@phdcci.in, with a cc to Dr. S P Sharma, Chief Economist | DSG at spsharma@phdcci.in, PHD Chamber of Commerce & Industry.

Warm Regards,

Dr S P Sharma



Chief Economist | DSG

PHD Chamber of Commerce and Industry

PHD House, 4/2 Siri Institutional Area

August Kranti Marg, New Delhi-110016, India

Tel: +91 49545454

Fax: +91 11 26855450

Email: spsharma@phdcci.in

Website: www.phdcci.in

Follow us on



"Voice of Industry & Trade"



PHD House, 4/2 Siri Institutional Area, August Kranti Marg, New Delhi - 110 016 (India) • Tel. : +91-11-2686 3801-04, 49545454, 49545400
Fax : +91-11-2685 5450, 49545451 • E-mail : phdcci@phdcci.in • Website : www.phdcci.in, CIN: U74899DL1951GAP001947

Connect with us:

